

G 603-1A HOUSING R.S. - STEEL  
A 2182 HOUSING R.S. - ALUM.

G 602-1A HOUSING L.S. - STEEL  
A 2180 HOUSING L.S. - ALUM

A2205-1 LOADING WHEEL  
(SHOWN DETACHED FOR CLARITY)

CAUTION LABEL  
CDWHEEL-ANSI

ROPE HOOKS (2)  
(TDH)

G 601 HOUSING ASSY. ONLY - STEEL  
A 2183 HOUSING ASSY. ONLY - ALUM

G 605 SPRING LOADER ROLLER ASSEMBLY

G 2005 ROLL MOUNTING ANGLES  
(SHOWN MOUNTED ON INSIDE, MAY BE MOUNTED ON OUTSIDE)

G 627 REAR SECTION

G 503 GUIDE WASHERS (2)

G 616 ROLLERS (2)

G 504 COLLARS (4)

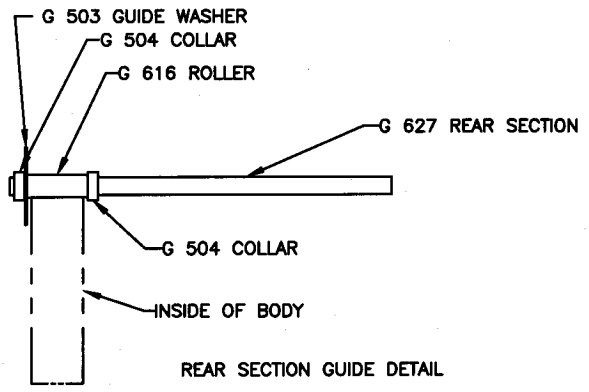
G 504 COLLAR  
G 625 EYE BOLT  
G 621 SNAP HOOK

PULL ROPE w/SNAP HOOK  
G 617 - 8/11'  
G 618 - 12/15'  
G 619 - 16/19'

G 622 TAILGATE HOOKS (2)

ROPE HOOKS (2)  
(TDH)

CAUTION LABEL  
CDANSI-ROPE



REAR SECTION GUIDE DETAIL

TARP NOT SHOWN FOR CLARITY

rev.8-06

<b>Pioneer, A Wastequip Co.</b>		
North Oxford, MA 01537		
E 600 INSTALLATION SCHEMATIC		
DWG.NO. E 600		
SCALE: NONE	DWN. BY:ENH	8-24-00