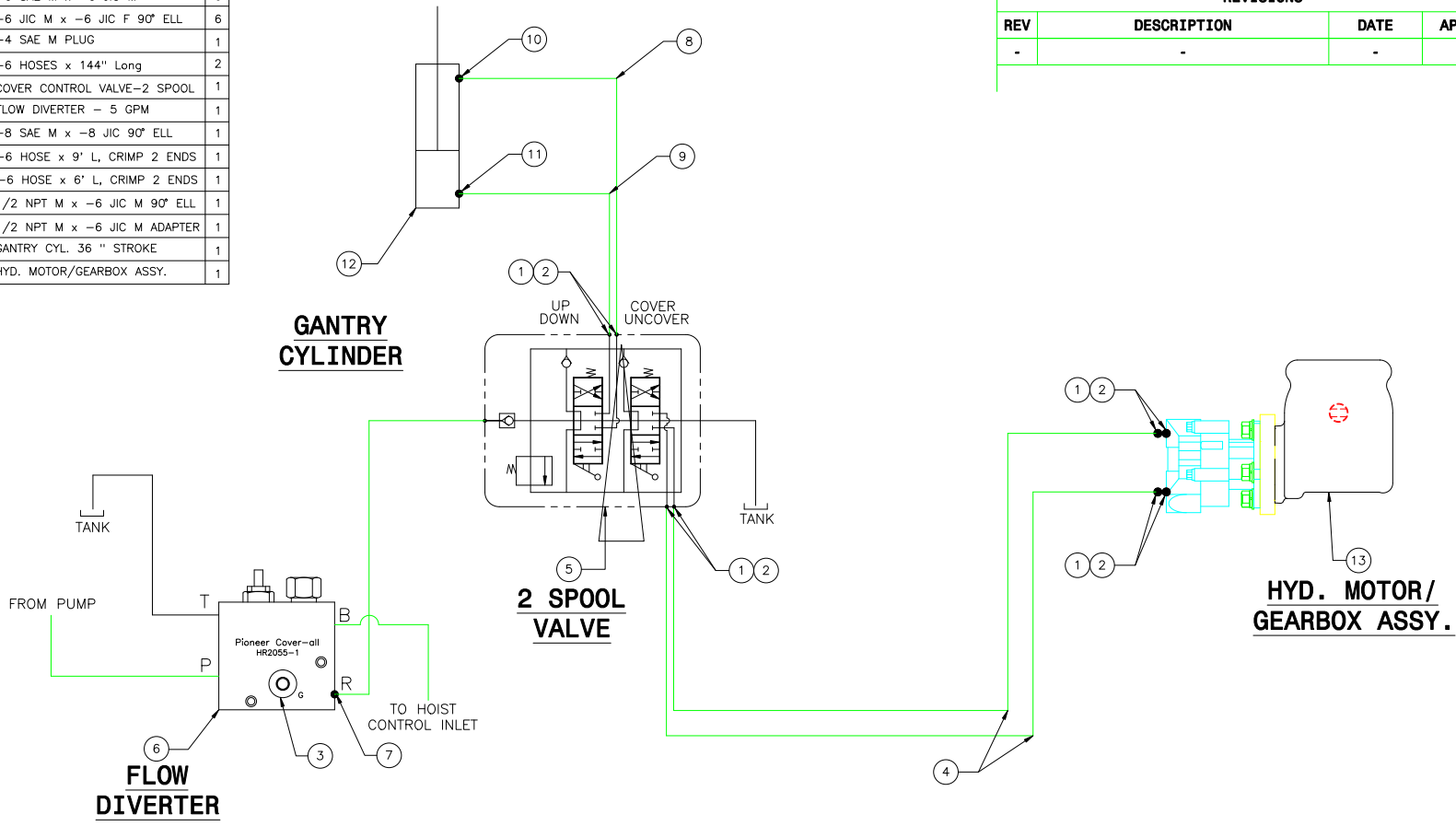


1	HR 1505	-6 SAE M x -6 JIC M	6
2	HR 4683	-6 JIC M x -6 JIC F 90° ELL	6
3	HR 2057	-4 SAE M PLUG	1
4	HR 1506	-6 HOSES x 144" Long	2
5	HR 4542	COVER CONTROL VALVE-2 SPOOL	1
6	HR 2055-15	FLOW DIVERTER - 5 GPM	1
7	HR 2021	-8 SAE M x -8 JIC 90° ELL	1
8	HR 4551A	-6 HOSE x 9' L, CRIMP 2 ENDS	1
9	HR 4552	-6 HOSE x 6' L, CRIMP 2 ENDS	1
10	HR 4558	1/2 NPT M x -6 JIC M 90° ELL	1
11	HR 4559	1/2 NPT M x -6 JIC M ADAPTER	1
12	HR 4520	GANTRY CYL. 36" STROKE	1
13	HR 1508	HYD. MOTOR/GEARBOX ASSY.	1

REVISIONS			
REV	DESCRIPTION	DATE	APPROVED
-	-	-	-



NOTE:
ON HOOK LIFT INSTALLATIONS, THE FLOW DIVERTER MUST BE INSTALLED AFTER (DOWNSTREAM OF) THE CONTROL VALVE FOR THE HOIST IN ORDER TO WORK AT LOW PRESSURE AND NOT INTERFERE WITH THE PERFORMANCE OF THE HOIST. THIS LOCATION MAY ALSO PROVE BENEFICIAL IN HOIST APPLICATIONS, WHERE FLOW RATES MAY INTERFERE WITH THE HOIST PERFORMANCE.

SCHEMATIC SHOWN WITH RECOMMENDED, PRV RETURN LINE BACK TO TANK. PRV BACK TO TANK MUST BE USED FOR APPLICATIONS WHERE FLOW RATES GREATER THAN 30 G.P.M. EXIST, OPTIONAL FOR LESSER FLOW RATES. REFER TO NOTE 2 FOR CONVERSION INSTRUCTIONS.

NOTE 2: MANIFOLD IS SUPPLIED WITH THE INTERNAL PLUG PACKAGED SEPARATELY, AND THE "T" PORT PLUGGED (NO RETURN LINE BACK TO TANK). FOR MAXIMUM SYSTEM PROTECTION, PIONEER RECOMMENDS THAT THE RETURN LINE BACK TO TANK BE UTILIZED. APPLICATIONS WHERE FLOW RATES GREATER THAN 30 G.P.M. EXIST, THE RETURN LINE BACK TO TANK MUST BE EMPLOYED. TO INSTALL THE LINE BACK TO TANK:
1) REMOVE THE DIVERTER VALVE.
2) INSTALL THE INTERNAL PLUG THROUGH THE "B" PORT.
3) REPLACE THE "T" PLUG WITH #16 SAE ADAPTER.
4) REPLACE THE DIVERTER VALVE.

Pioneer, A Wastequip Co.
North Oxford, MA 01537

HR1500 PTO HYD. SCHEMATIC

PART NO. HR1500PTO HYD. SCHEMATIC	DATE
SCALE: NONE	DRW. BY: R.A.T. 4/17/07